

EXPLANATION OF THE PLATE.

FIG. I.—The Human Skeleton in Profile.

- Na. The Nasal bones.
- Fr. The Frontal bone.
- Pa. The Parietal bones.
- Oc. The Occipital bone.
- Mn. The Mandible or Lower Jaw.
- St. The Sternum.
- R. The Ribs.
- R'. The Cartilages of the Ribs.
- S. The Sacrum.
- Cx. The Coccyx.
- Scp. The Scapula or Shoulder Blade.
- Cl. The Clavicle, or Collar Bone.
- H. The Humerus.
- Ra. The Radius.
- U. The Ulna.
- Cp. The Carpus.
- Mc. The Metacarpus.
- D. The Phalanges of the Fingers, or Digits of the Hand.
- I, II, III, IV, V. The Thumb, or Pollex, and the succeeding Fingers.
- Il. The Ilium.
- Pb. The Pubis.
- Is. The Ischium.
- F. The Femur.
- Tb. The Tibia.
- Fb. The Fibula.
- T. The Tarsus.
- Mt. The Metatarsus.
- D. The Phalanges of the Toes, or Digits of the Foot.

In the Skull.  
In the Thorax.

In the Arm

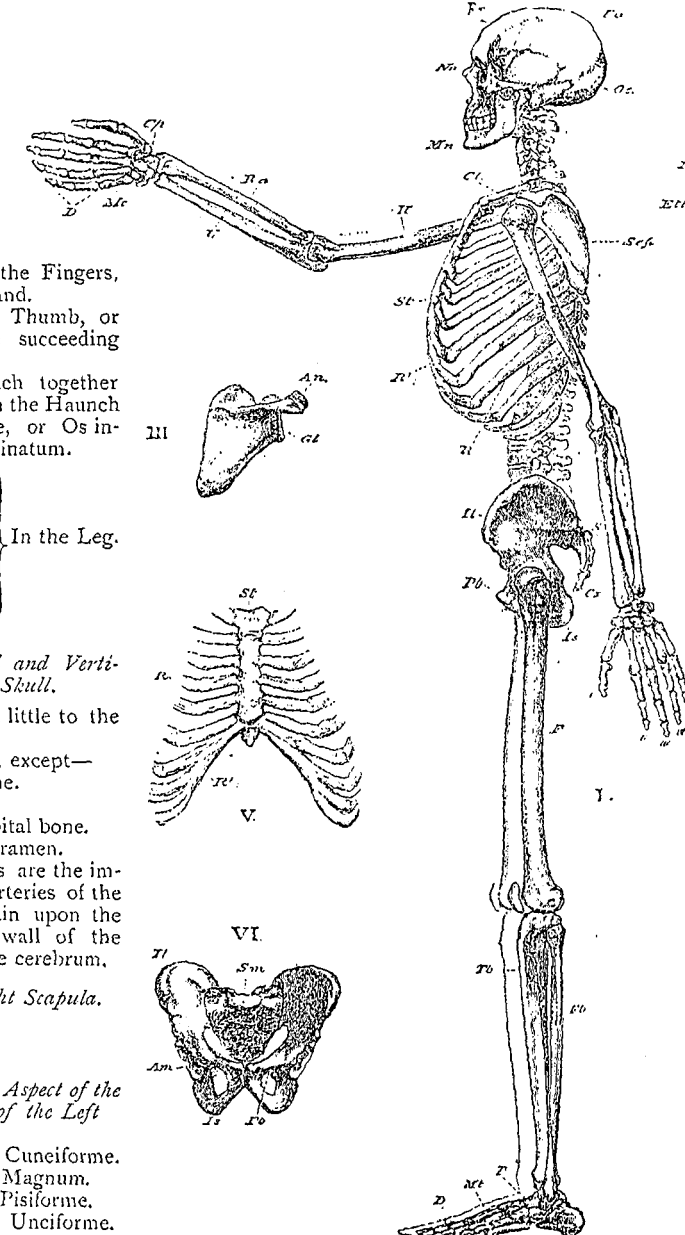


FIG. VII.—The Dorsal Aspect of the Tarsus of the Left Foot.

- Ca. Calcaneum.
- As. Astragalus.
- N. Naviculare.
- C<sup>1</sup>, C<sup>2</sup>, C<sup>3</sup>. The three Cuneiform bones.
- Cb. The Cuboid.

I would ask you to note the figure of this skeleton very carefully, and acquaint yourselves with the names of the different bones as given in the above letterpress, learning them by heart, as we shall have

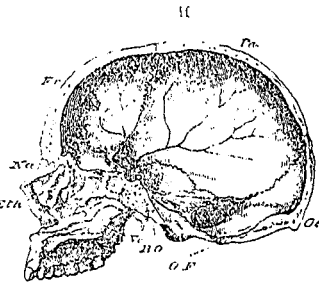


FIG. II.—Longitudinal and Vertical Section of the Skull.

The section passes a little to the left of the middle line.  
The letters as before, except—  
Eth. The Ethmoid bone.  
Vo. The Vomer.  
B.O. Part of the Occipital bone.  
O.F. The Occipital Foramen.

The branching lines are the impressions left by the arteries of the membranes of the brain upon the inner surface of the wall of the cavity, which lodges the cerebrum.

FIG. III.—The Right Scapula.

- An. Acromion process.
- Gl. Glenoidal cavity.

FIG. IV.—The Dorsal Aspect of the Bones of the Carpus of the Left Hand.

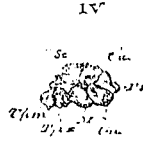
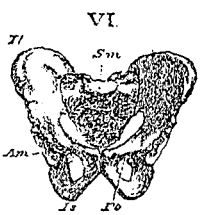
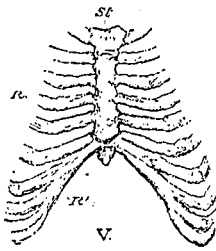
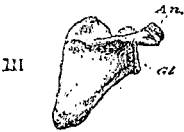
- Sc. Scaphoides.
- Cu. Cuneiforme.
- Tpm. Trapezium.
- M. Magnum.
- L. Semilunare.
- Ps. Pisiforme.
- Tpz. Trapezoides.
- Un. Unciforme.

FIG. V.

A front view of the Sternum, St., with the Cartilages of the Ribs, R', and part of the Ribs themselves, R.

FIG. VI.—A Front View of the Pelvis.

- Sm. The Sacrum.
- Il. Pb. Is. as before.
- Am. The Acetabulum.



frequent occasion hereafter to refer to them by their anatomical names.

All these bones are fastened together by cords,

\* It would probably be useful to cut this figure out or preserve this number of the journal for future reference.

[previous page](#)

[next page](#)